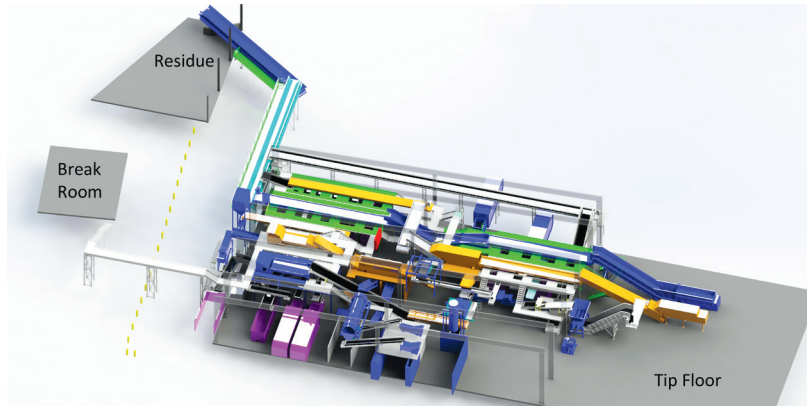


Davis Street Resource Recovery Complex

HIGH-DIVERSION CONSTRUCTION & DEMOLITION (C&D)/COMMERCIAL MATERIAL RECOVERY FACILITY (MRF) EXPANSION



In 2014, Waste Management of Alameda County, Inc. (WMAC) invested \$10 million to increase sorting capabilities and processing capacity to recover most “Readily Recyclable Materials,” with less than 10 percent of these materials in the residue. This high-diversion MRF is designed to meet CalRecycle’s CalGreen C&D and StopWaste’s commercial diversion goals for Alameda County. It is the only MRF in the region that meets both requirements. Recovered commodities are sent to markets and used in WM EarthCare™ landscape products.

Expansion Cost \$10 million

Expansion Completed April 2014

Capacity 1.6 million pounds (800 tons) a day

Materials Accepted Commercial Commingled (Dry Waste/Recycling)

- Fiber: ONP, MP, OCC
 - Containers: Glass, Aluminum, Tin, Scrap Metal, Plastics 1–7, Rigid Plastics, Film
- Construction & Demolition: Wood, OCC, Concrete, Metal, Dirt, Rock, Brick, Rigid Plastics

MRF Technologies **Air Separators:** To separate small pieces of paper

Magnets: To recover ferrous metal

Optical-Sorting: To separate wood and aluminum

Vacuum System: To separate film plastics

Vibratory Screen (Small Stones/Rocks): To separate small stones/rocks, which will be reused for construction and avoiding use as ADC

Vibratory Screen (Wood): To separate out wood

Accreditation Recycling Certification Institute

Contact Erika Solis
Davis Street Resource Recovery Complex
2615 Davis Street, San Leandro, CA 94577
510-563-4223
Esolis3@wm.com



www.davisstreet.wm.com