



September 2020

Southern Services Facility A Waste Management of Tennessee Facility



Presentation Overview

- Introduction to Site Management and Representatives
- Provide an Overview of the Southern Services Facility
- Update Community on Status of Ongoing Projects at the Facility
- Discuss Upcoming Projects at the Facility
- Open Lines of Communication

Southern Services Facility

Site Management

Don Gentilcore, Senior District Manager

- 25 years experience in the solid waste business
- Started with Waste Management in February 2020
- Responsible for Middle Tennessee Area for Waste Management
- Office is at Southern Services

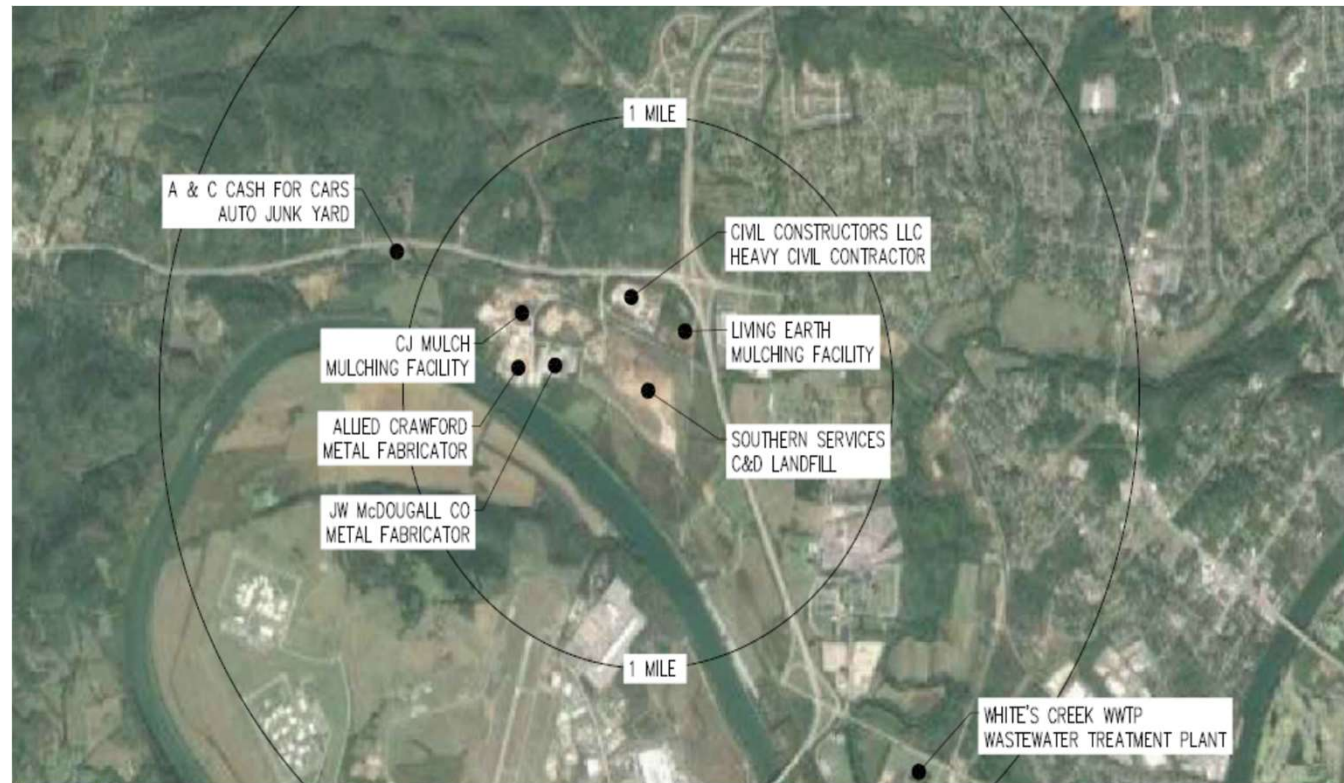
Waste Management

- Waste Management provides solid waste collection services to nearly 20 million customers in North America.
- Waste Management is the largest residential recycler in North America.
- Waste Management has more than 20,000 protected acres of wildlife habitat.
- Waste Management has invested in the community through its Think Green Grant program

Southern Services Facility

C&D Landfill

- Operating facility for approximately 40 years
- Located in an Industrial Area
- Bounded by Briley Parkway, Railroad Tracks and Cumberland River



Southern Services Facility Overview

- 183 acres owned by Waste Management
- 77 acres used for Construction Demolition & Debris (C&D) Landfill
- 53 acres for wetland/wildlife conservation and flood storage
- 53 acres for support facilities
 - Roads, scalehouse, office
 - C&D Recycling
 - Soil Borrow Area

Southern Services Facility

Site Operations

- Class III Landfill
 - Permitted to accept construction, demolition and debris material (C&D), which includes brick, lumber, soil, rock and concrete, shingles and other construction materials
 - Material from commercial, industrial and residential construction
- The Landfill does NOT ACCEPT municipal solid waste (MSW) or Source Separated Recyclables
- Landfill Operations are Permitted and Regulated by the Tennessee Department of Environment and Conservation (TDEC)
- TDEC regularly conducts compliance inspections of the Landfill
- Metro Nashville Department of Health regulates and inspects Air Permits

Southern Services Landfill



Waste Management's Middle Tennessee Environmental Center (MTEC)

- Located on the Southern Services Facility
- Only C&D Recycling Operation in Davidson County
- Materials Recovered include metal, wood, concrete and cardboard
- Materials are diverted from Landfill disposal for reuse



Wildlife Habitat

- Waste Management is proud to have worked and partnered with the Wildlife Habitat Council of the last 20 years. Waste Management has over 80 certified sites and Southern Services is home to one of them.
- 30 acres set aside as a freshwater wetland
- Mitigated Wetlands enhanced to provide bird habitat
- Certified as a Wildlife Habitat by the Wildlife Habitat Council
- Partnership with the Tennessee Ornithological Society of Nashville to monitor the variety of birds



Southern Services Facility

Operations Update – September 2020

- Cover Placement along outside slopes of Landfill
- Working Face Relocated to Western Portion of Site
- Neutralizing Misters Added
- Odor Collection System Expanded



Southern Services Facility

Construction Update – September 2020

- Odor System Construction Started week of July 13th
- System Components
 - 6000 feet of pipe
 - Three fixed flare systems
- Projected Schedule
 - Substantial Completion September 15th
 - Startup and system balancing – September-October 2020



Southern Services Facility

Community Odor Monitoring Update

- Third party company, Odor Science, conducted a total of 12 community odor surveys during the 5 day period between June 8th and June 12th 2020
- Survey times varied throughout the day to account for meteorological patterns



Southern Services Facility

Odor Survey Results

- No landfill related odors were detected in any residential areas during the survey period
- The only landfill related odors detected were faint odors detected immediately adjacent to the site
- Other odor sources identified include mulching operations, sewage stations, petroleum storage tanks
- Third party odor surveys continue to be conducted daily and no landfill related odors have been detected in residential areas

Southern Services Facility

Future Plans

- Site currently has 3-4 years of remaining permitted disposal capacity based on current filling rate
- Exploring Expansion of the current 77 acre footprint
- Permitting process controlled by State (TDEC)
- Anticipated engineering, environmental studies and permitting process will take 2-3 years

Southern Services Facility

Communication

- Southern Services Facility Website being launched early October
 - Email list for interested residents
 - Community Updates
 - Feedback Form
- Regular Newsletter
- Tours of Facility
- Dedicated email for questions/comments – southernservices@wm.com

Thank you

