

SPRING NEIGHBORHOOD & ON-CALL BULKY PICKUP GUIDELINES

- **Spring Neighborhood Bulky Pickup** is on the same day for all qualifying residents in each designated area: Monday - Doyle Street; Tuesday - Triangle neighborhoods. Annual neighborhood pickup is in April: in 2006 - April 10 and 11.
- **On-Call Bulky Pickup** may be scheduled for any time during the year. **You must schedule for pickup, call (510) 613-8710.**
- **Separate items for recycling!** Place items curbside by 6 am and no earlier than 1 day before your scheduled pickup date.

2 CUBIC YARD LIMIT FOR NON-RECYCLABLE ITEMS

Up to two cubic yards – equals a 3' x 6' x 3' ft. area or about thirteen 32-gallon bags.

Property owner will be charged for excess materials over the two cubic yard limit, at \$14.21 per cubic yard (2005 rate). Fees adjusted annually in January.



2 Cubic Yards (3'h X 6'w X 3'deep)



GROUP A

GROUP B

GROUP C

RECYCLABLE ITEMS – Group A & B: No yardage limit for recyclable items that are properly sorted and bundled.

Group A (weight limit does not apply)

- **Large Residential Appliances** **Prepare for Pickup:**
 - Have doors and lids removed
 - Keep dry and free of garbage
 - Place upright (not on their sides)
 - No leaking or other hazardous materials
- Do not stack large items on top of each other



- **Tires**
Automobile tires or smaller

- **Computer Monitors, CPUs, TVs**



- **Mattresses**



Items not properly prepared and separated will count towards your 2 cubic yard limit.

Group B (weight and size limits apply)

- **Yard Trimmings**
No herbicide contamination
Prepare for Pickup:
 - All yard trimmings must be bundled and tied or put in paper gardening bags (available in many hardware stores). Yard trimmings in plastic bags cannot be recycled and will count toward your 2 cubic yard limit
 - Branches, wood or scrap metal must not exceed 4 ft. long or 6 in. in diameter
 - Branches and wood must be bundled
 - Put smaller items in cardboard box or paper bag

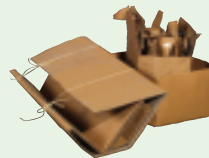


- **Clean Wood**
Unpainted, untreated wood only



- **Scrap Metal**
Painted items OK, no electronics or glass parts

- **Cardboard**
Flattened & bundled



NON-RECYCLABLE ITEMS:

Group C (2 cubic yard limit)

- **Household Furniture and Carpet**
Carpet must be bundled, less than 4 ft. long



- **Small Appliances**



- **Other:**
Any non-hazardous items that meet the weight and size limit are OK

Painted wood/doors must be less than 6 ft. long



Loose items must be bagged or boxed

STOP, DO NOT INCLUDE:

No item over 75 pounds
(except for Group A and furniture)

Unaccepted items will be tagged and left with recommended disposal information and be subject to City fines.

No Hazardous Waste

No paint, pesticides, solvents, car batteries or materials containing asbestos. For hazardous waste disposal information, contact the Alameda County Household Hazardous Waste Program (800)606-6606 or www.household-hazwaste.org.

No Rocks, Dirt or Concrete

For recycling options call The Alameda County Recycling Hotline: (877) StopWaste (786-7927) or contact www.StopWaste.org. For disposal of construction items, call Waste Management at (510) 613-8710

One On-Call pickup per year per household.

Call Waste Management to schedule a pickup or for more information at (510) 613-8710.

