



City of Irvine Recycling News



Spring 2024

Brought to you by WM,
Irvine's residential waste service provider.

April is Earth Month! Invest in our Planet

Celebrate Earth Day with the City of Irvine and Waste Management

Planet vs Plastics is the City of Irvine's focus this year, and we're highlighting a commitment to end non-recyclable plastics for the sake of human and planetary health.

All are welcome to participate, as there will be educational booths and family-fun activities at the event.

- Saturday, April 13th
- 11:00 a.m. to 2:00 p.m.
- Quail Hill Community Center
39 Shady Canyon Drive, Irvine



Your New Organics Program

Did you know? When organic waste such as food or yard waste goes to the landfill, it releases methane gas? A greenhouse gas that is 28 times more potent than carbon dioxide, this gas contributes to global warming. This is why it is so important to participate in separating your organic waste from the trash. Here are some steps to participate:

1. Grab an empty container, bag, or kitchen food pail and place it in a convenient spot in your kitchen.
2. Place any food scraps, plate scrapings, or food soiled paper in your desired container.
3. At the end of the day, take your bag or container to your organics cart and empty the contents directly into your green cart. Reuse the container or place the bag in the trash bin.

Handy Tip If your container or bag is not full by the end of the day, try storing it in the fridge or freezer to minimize odors.

Recycle Right

When you recycle, you are giving a new life to an item that would otherwise be considered trash. Recyclable items such as water bottles, aluminum cans, paper, cardboard and glass can all be transformed into new products such as clothing, napkins, and even furniture.



For WM to recycle as much as possible, we need Irvine's help to minimize any contamination that could jeopardize otherwise good recyclables. Contaminants can include items such as hoses, plastic film, or foods and liquids.

You can prevent this problem by following these simple rules to recycle right:

1. Empty all bottles, cans, and paper products before recycling.
2. Keep food and liquids out of your recycling.
3. Place items loosely in your recycle cart.

Visit wm.com/recycle-right to learn more about how to recycle right!

City of Irvine Compost Giveaway



Did you know that when you recycle your food waste in your organics cart at home with WM, that food gets turned into compost right here in Irvine?

Spring is the perfect time to use compost in your garden as a natural fertilizer or even as a soil amendment. The City of Irvine has partnered with Tierra Verde Industries to supply free compost to Irvine Residents.

- Saturday, April 6th
- 10:00 a.m. to 1:00 p.m.
- Great Park, 8000 Great Park Blvd, Parking Lot 8
- Receive up to (3) bags of compost (20 lbs each) for free from Tierra Verde Industries

Senior Citizen Discount

WM and the City of Irvine are pleased to offer discounted rates for qualifying residential senior customers.



How do I qualify for the Senior Citizen Discount?

- Must provide proof of 65 years of age or older
- Must own or rent/lease the home
- Must live in the home full time

To fill out an application, please visit wm.com/us/local/ca/irvine/residential/ for the form, or contact WM Customer Service at **(949) 642-1191**.



City of Irvine Green Business Program

The City of Irvine is now offering a Green Business Certification program to help businesses operate sustainably and receive public recognition.

We provide all the tools you need to go green and to help you save money. Rebates of up to \$500 are available for green business improvements are available. For more information or to register online, visit greenbusinessca.org.

Free Bulky Item Pickup Spring Cleaning? Let us help!

Irvine residents may request four (4) free bulky item pickups per year. We will retrieve up to four (4) large items, such as furniture or appliances, for each request. Electronic waste, such as TVs, computers, monitors, and DVDs, is also included in this program.



Please call WM Customer Service at least 48 hours in advance of your collection day to schedule a pickup. **(949) 642-1191**



WM Holidays

New Year's Day

Labor Day

Memorial Day

Thanksgiving Day

Independence Day

Christmas Day

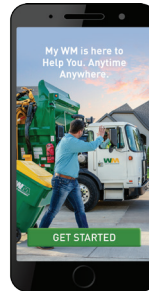
Residential collection service will be delayed one day following the above holidays. If a holiday falls on a Saturday or Sunday, there will be no delays.

Join Us Online!

If you haven't had a chance already, visit wm.com to create your online WM account. View and pay your quarterly waste bill, sign up for auto pay, and set paperless billing preferences.



Please also confirm your preferred contact information is up-to-date. This ensures you receive the latest information regarding your collection services.



My WM Mobile App

Downloading the My WM mobile app makes it easy for you to manage your WM accounts on the go.

Getting started is easy: you can log in with the same Email and Password you use to log in to wm.com.

You may also complete first-time registration through the app.

- Manage your payments and pay your bill
- Enroll in automatic payments
- Sign-up for paperless billing
- View payment history, cancel scheduled payments
- View pickup schedule, holiday schedule, and weather alerts

Free Used Oil Filter Exchange

Exchange your used oil filter for a free replacement. Please drain your filter for at least 24 hours. One filter per person.

- Saturday, April 27th
- 8:00 a.m. to 2:00 p.m.
- O'Reilly Auto Parts
15315 Culver Drive, Suite 170, Irvine



WM Customer Service
cslosangeles@wm.com • (949) 642-1191
home.wm.com/irvine

