



Be Rain Ready on Collection Day

Help keep your community clean by preventing waste from being swept into the street during heavy rainfall. Please keep the following tips in mind during winter months:

1. Check the weather forecast and if severe weather is predicted, wait until the following week to have trash and recycling carts serviced, if possible.
2. Be aware of potential storm water flows in and around your property and make sure outdoor items are secure.
3. Avoid placing carts and bulky items where flows can create hazards. In swift moving waters, these items can be carried into the street.
4. Bag your trash before placing it in the cart to minimize spillage, should the cart tip over. (Note: Do not bag recyclables or green waste)
5. After service, close the cart lids and move them away from the curb as soon as possible in order to prevent them from blowing over or floating into the street.



Proper Cart Placement

Proper placement of trash and recycling carts helps us provide effective and efficient service to Santa Clarita residents. Besides placing the carts at the curb with no obstructions, it is important to make sure that you do not place them in front of mailboxes. Our friendly United States Postal Carriers also need to be able to provide service, so we ask that you do not block mail boxes when placing your WM carts out for service. Please contact customer service if you have any questions.

Check the Lid.

Your next trash, recycle or green waste cart may look different. To comply with a new state law, we're introducing a new color scheme.



Trash



Recycle



Green Waste

Holidays

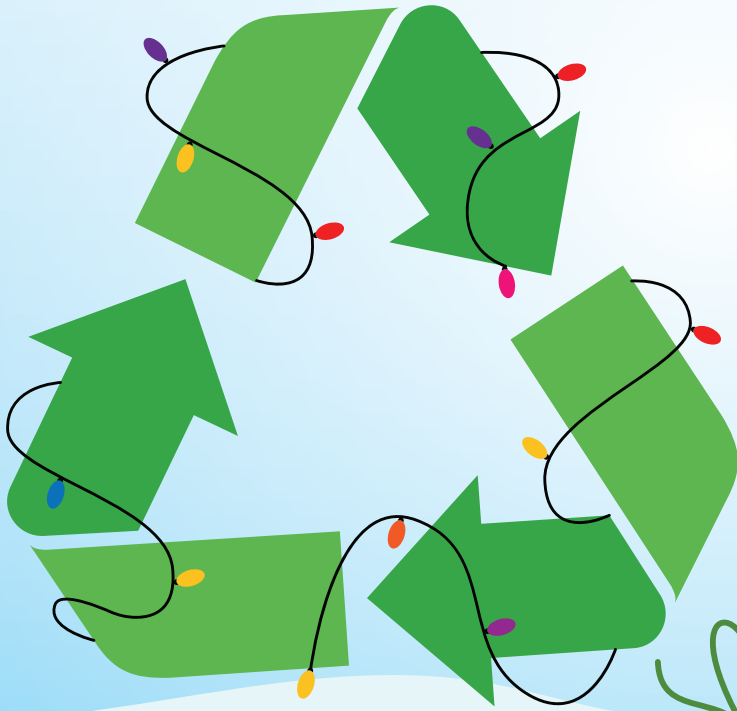
WM observes the following holidays:

- Christmas Day** (Sunday, December 25, 2022)
- New Year's Day** (Sunday, January 1, 2023)

Since these Winter holidays fall on weekends, there will be no service delays.



It's Merry and Bright to Recycle Right

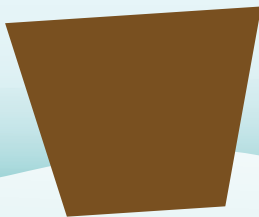


Holiday trees will be collected and recycled on your regular collection day beginning December 26, 2022 through January 14, 2023.

Before placing trees out for collection:

- Please remove lights, tinsel, ornaments and stands.
- Cut trees larger than 6 feet in half when possible.
- For multi-family communities, place your trees next to your designated trash enclosure.

Please note: flocked trees will be collected and disposed of as trash; they cannot be recycled.



**For more information, contact your waste hauler
or the City of Santa Clarita at (661) 286-4098**

GREENSANTACLARITA.COM

Senior Citizen/Low Income Discount



A senior citizen/low-income resident discount is available to residential customers that are either 60 years of age or older and are considered to be the head of their household, or qualify for and receive lifeline telephone service. This discount cannot be combined with any other discounts. To apply, please contact Customer Service at **(661) 259-2398**.

Residential Drop-off Center

Santa Clarita residents with active accounts can drop off extra recyclables, electronic waste or bulky items at our Drop-off Center located at **25772 Springbrook Ave.** The center is open **Monday through Friday from 8:00 a.m. to 5:00 p.m.** (except during rainy weather or on holidays). Visitors must check in with the receptionist before unloading. Limit one (1) cubic yard of material per visit. Acceptable items include cardboard, mixed recyclables, mattresses, televisions, computers, washers, dryers and furniture. Non-acceptable items include household hazardous waste, commercial waste, construction and demolition debris and any items requiring more than two persons to move. No trash or bundled green waste.

Battery Drop-off Locations

The City's battery recycling program makes it easy for residents to recycle household batteries, including AA, AAA, C cells, D cells, rechargeable and button batteries. Visit any of these six locations conveniently located in Santa Clarita. For hours of each location, visit: GreenSantaClarita.com.

Valencia Library

23743 W. Valencia Blvd.
(661) 259-8942

Canyon Country

Jo Anne Darcy Library

18601 Soledad Canyon Rd.
(661) 251-2720

Santa Clarita City Hall

23920 Valencia Blvd.
(661) 259-2489

Canyon Country Community Center

18410 Sierra Highway
(661) 284-1480

Newhall Community Center

22421 Market St.
(661) 286-4006

Old Town Newhall Library

24500 Main St.
(661) 259-0750

Always Recycle:



Plastic Bottles and Containers

Paper

Flattened Cardboard

Food and Beverage Cans

Glass Bottles and Jars

Do not include in your recycling:



No Food Waste

No Foam Cups and Containers

No Needles

No Plastic Bags and Film



MOST COMMON CONTAMINANTS

Keep these common contaminants OUT of your recycling cart.



NO RECYCLABLES IN PLASTIC BAGS

Empty recyclables directly into your bin and leave the plastic bag out.



NO FOOD & LIQUIDS

Compost instead! Otherwise it belongs in the trash.



NO ELECTRONICS & SMALL APPLIANCES

Donate if in good condition, or schedule a bulky item pickup, if available. Check earth911.com for a local drop-off site.



NO TEXTILES, BEDDING, RUGS & CARPET

Donate these items if they are in good condition. Large quantities may require special disposal.



NO TANGLERS, HOLIDAY LIGHTS, HANGERS & EXTENSION CORDS

They wrap around equipment and can shut down an entire facility! They all go in the trash.



NO PLASTIC BAGS, FILM/SHEETING & FLEXIBLE FILM PACKAGING

Take plastic bags back to local retailers to keep them out of the recycling stream. Visit plasticfilmrecycling.org to find a drop-off location near you.



NO PAPER NAPKINS, PLATES, CUPS & TISSUES

Compost if possible, and remember to recycle the cardboard tube.



NO POLYSTYRENE FOAM

Foam and plastic containers are not recyclable curbside. Find drop-off programs for items like foam packing peanuts at earth911.com.



NO TIRES, AUTO PARTS & SCRAP METAL

(Not in recycling or trash.) All can damage equipment and are safety hazards. Contact your local scrap recyclers or retail tire stores for recycling options, or check earth911.com for a drop-off center near you.



NO CONCRETE, WOOD & CONSTRUCTION DEBRIS

Can damage equipment & are safety hazards. You may be able to schedule a bulky item pickup - otherwise throw it in the trash or order a roll off bin by contacting Waste Management Customer Service.



NO YARD WASTE & WOOD

Compost or put in your yard waste cart, if available. Otherwise it belongs in the trash.



NO NON-RECYCLABLE PLASTIC

Not everything that is plastic is recyclable! Recycle only food & beverage bottles, jugs and tubes.

To learn more, visit wm.com/recycleright

©2020 WM Intellectual Property Holdings, L.L.C.



WM CUSTOMER SERVICE
(661) 259-2398 home.wm.com/santa-clarita
GreenSantaClarita.com